



# EPA Region 10

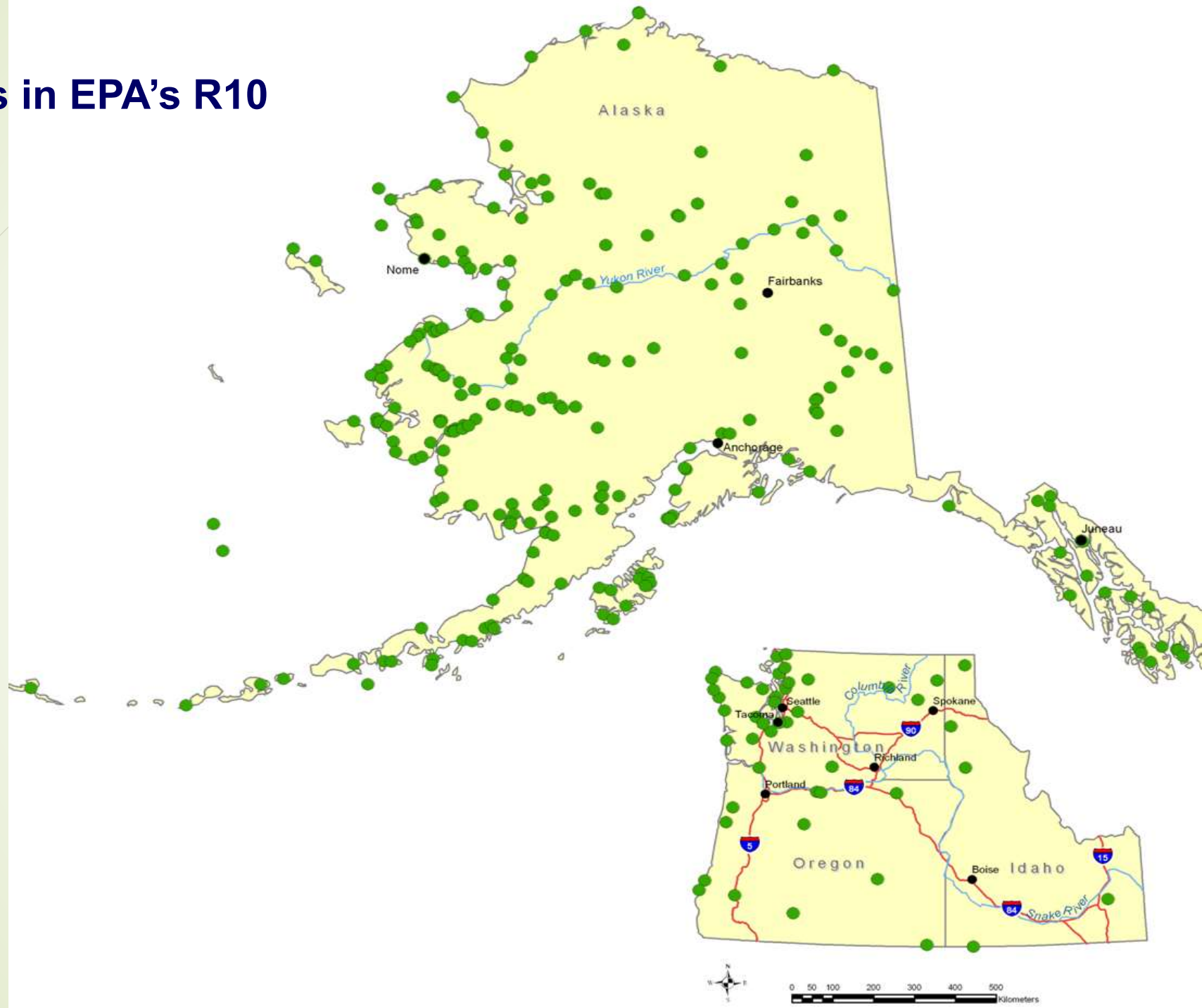
Tribal Engagement

January 2017

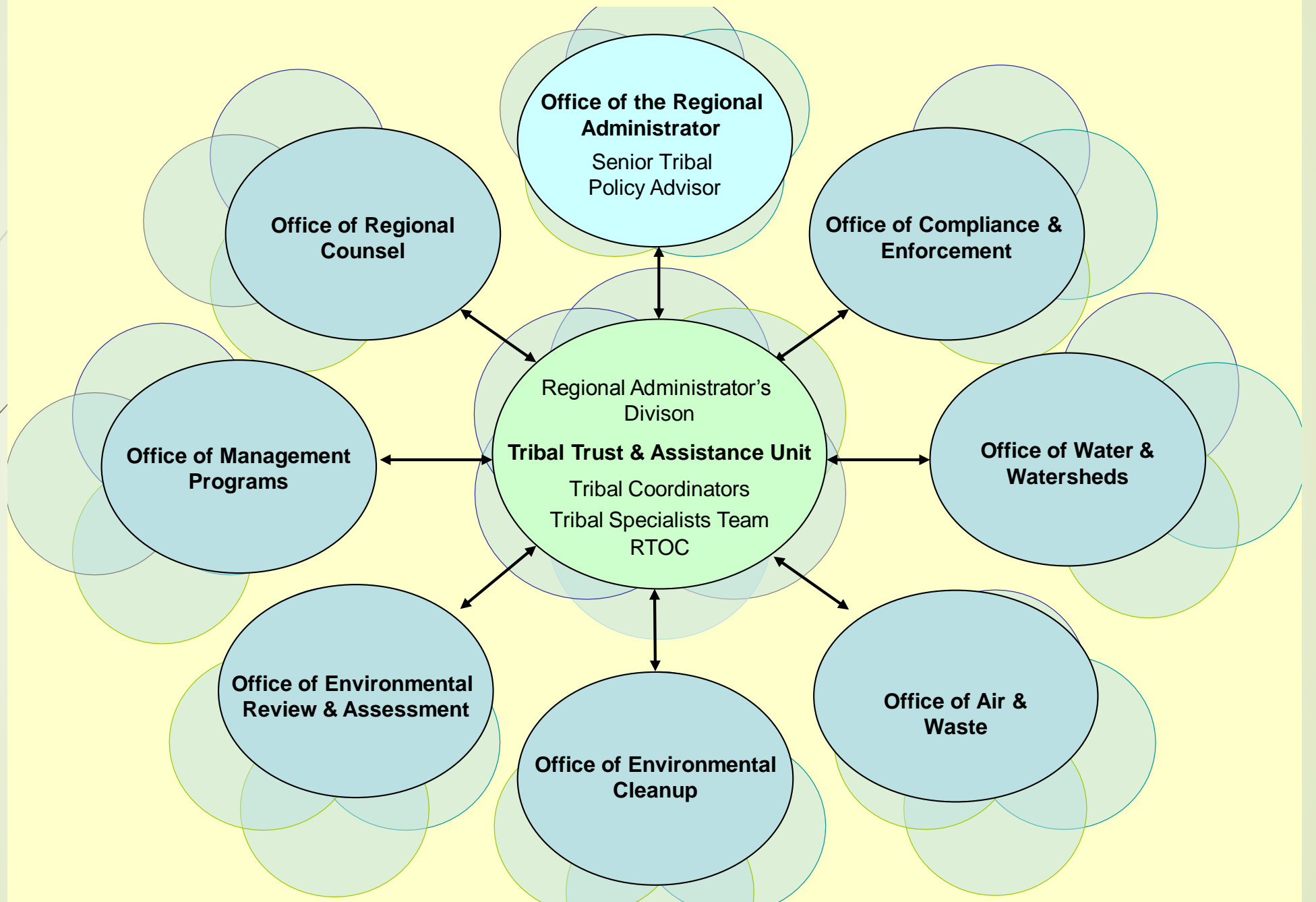
# EPA's Regions



# Tribes in EPA's R10

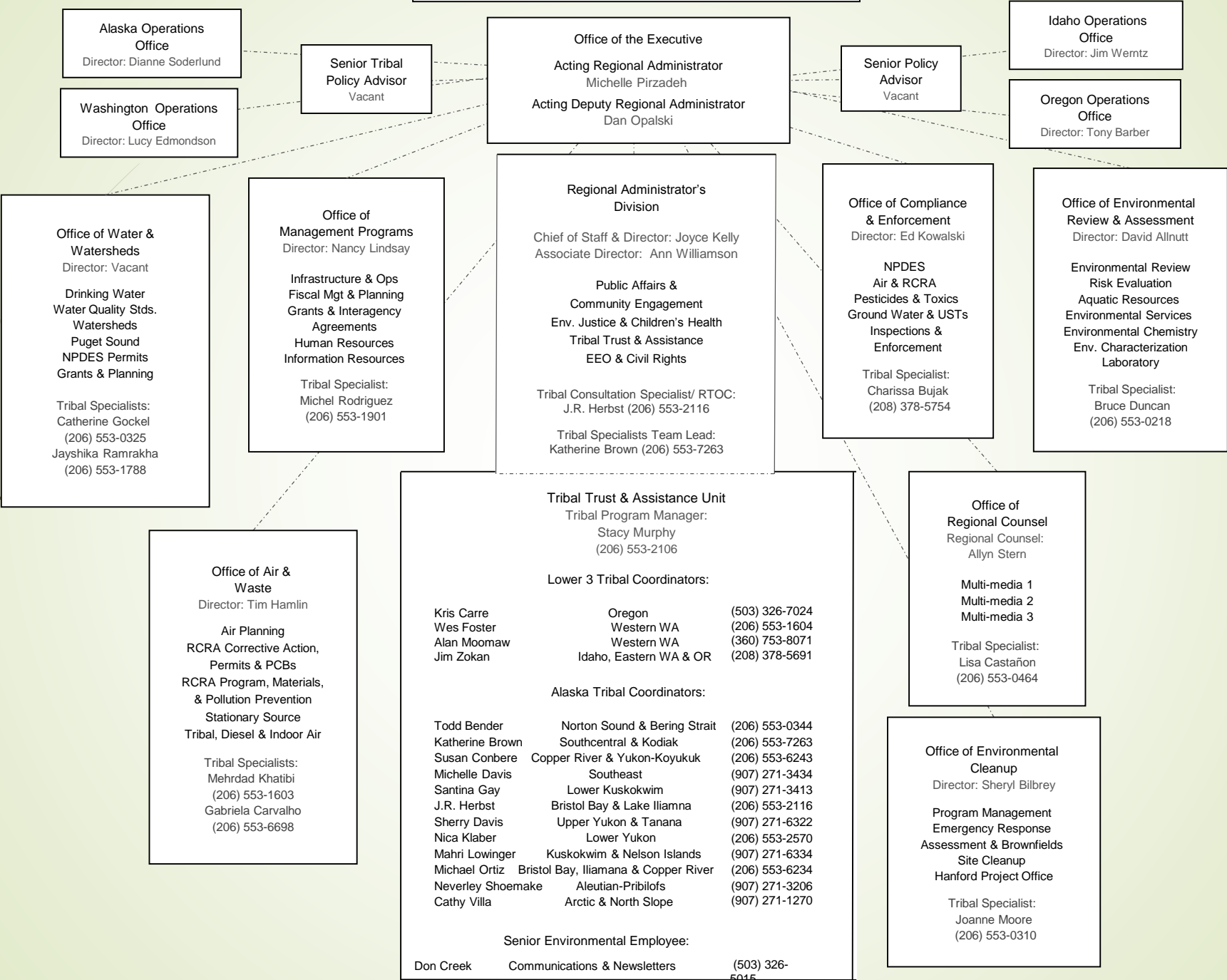



# R10 Program Structure





**EPA R10 Organization & Tribal Program Contacts**



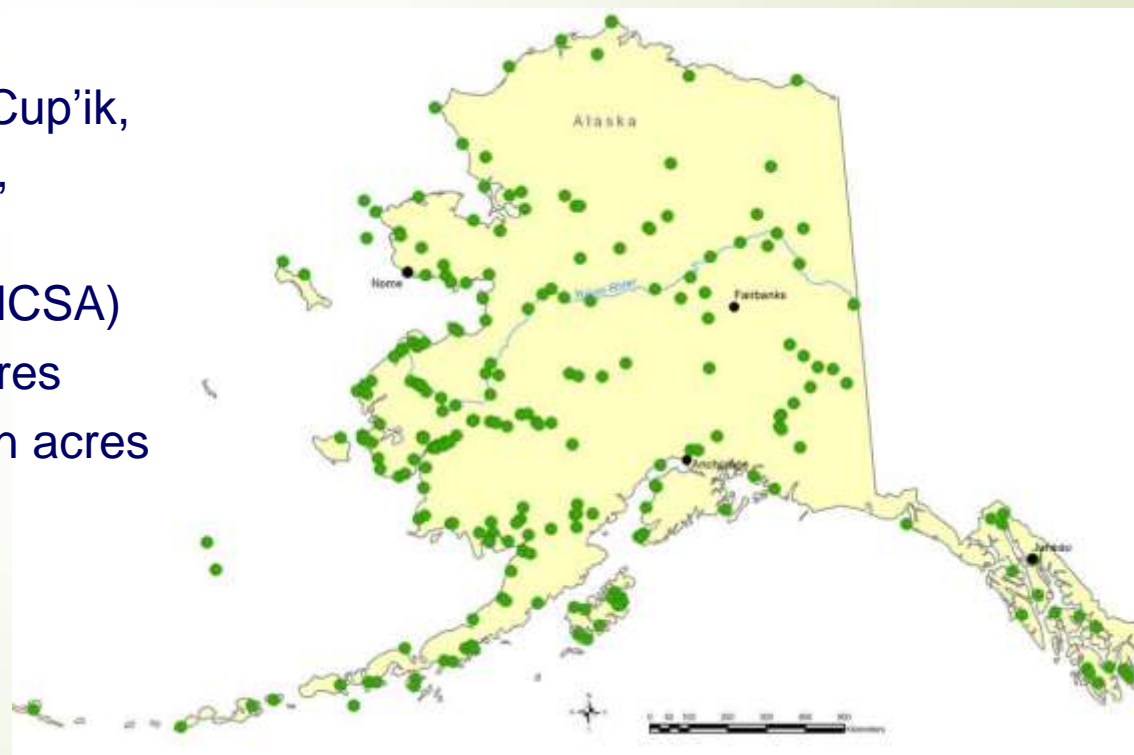


# Indian Environmental General Assistance Program Act of 1992

- ▶ - provide general assistance grants to Indian tribal governments and intertribal consortia to build capacity to administer environmental regulatory programs that may be delegated by the Environmental Protection Agency on Indian lands; and
- ▶ - provide technical assistance from the Environmental Protection Agency to Indian tribal governments and intertribal consortia in the development of multimedia programs to address environmental issues on Indian lands.

## Alaska Tribes

- 229 federally recognized tribes
- 11 Major cultural/linguistic groups
- Inupiaq & St. Lawrence Yup'ik, Yup'ik & Cup'ik, Aleut & Alutiiq, Athabascan, Eyak, Tlingit, Haida, and Tsimshian
- Alaska Native Claims Settlement Act (ANCSA)
- Native Corporations lands ~40 million acres
- Native allotments & townsites ~1.5 million acres



# Washington, Oregon, and Idaho Tribes

- 42 federally recognized tribes
- Washington (29 tribes)
- Oregon (9 tribes)
- Idaho (4 tribes)
- Treaties and Executive Orders
- Puget Sound/ Boldt Decision/ Co-management
- Reservation lands ~5.7 million acres







## Some Regional Tribal Organizations

- R10 Regional Tribal Operations Committee (RTOC)
  - Affiliated Tribes of Northwest Indians (ATNI)
  - Northwest Indians Fisheries Commission (NWIFC)
  - Columbia River Inter Tribal Fish Commission (CRITFC)
  - Oregon Tribal Environmental Forum (OTEF)
  - Alaska Federation of Natives (AFN)
  - Yukon River Inter Tribal Watershed Council (YRITWC)
- 

# EPA Tribal Consultation & Coordination National Policy and Region 10 Procedures

EPA Policy on  
Consultation and Coordination with Indian Tribes  
(May 4, 2011)



EPA Region 10  
Tribal Consultation & Coordination Procedures  
(October 16, 2012)

# EPA Region 10 Activities That May Be Appropriate for Tribal Consultation

- **Regulations or rules**
- **Policies, guidance documents, directives**
- **Permits**
- **Civil enforcement and compliance monitoring actions\***
- **Response actions and emergency preparedness\*\***
- **National Priority Listing and deferral decisions**
- **State or tribal authorizations or delegations**
- **Designation of disposal sites**
- **EPA activities in implementation of U.S. obligations under an international or tribal treaty or agreement**

\*Primary guidance on civil enforcement matters involving tribes can be found in EPA's "Guidance on the Enforcement Priorities Outlined in the 1984 Indian Policy," "Questions and Answers on Tribal Enforcement Process" and the Region 10 Enforcement Procedures in Indian Country.

\*\*The term "response" as defined under the Comprehensive Environmental Response, Compensation, and Liability Act (CERCLA) includes removal and remedial actions. For EPA Region 10 Emergency Response Tribal Consultation Procedures see Appendix A.



## Tribal Trust and Assistance Unit Work

- Facilitate implementation of Executive and Agency Indian Policies, and EPA and R10 strategies, plans, and procedures related to tribes
- Coordinate R10's Tribal Program, Tribal Specialists Team, and RTOC
- Maintain Government-to-Government relations with 271 tribes
- Assist other EPA offices with tribal communications & consultations
- Administer more than 240 GAP and PPG grants
- Provide training opportunities and technical assistance to tribal staff
- Provide Working Effectively with Tribal Governments Training to EPA staff
- Support climate change, resource extraction, and environmental justice work





## Some Priority Environmental Issues

- Safe drinking water and basic sanitation systems
- Water pollution, pesticides, and subsistence food protection
- Tribal fish consumption rates and water quality standards
- Indoor and ambient air quality
- Open dumps, landfills, O&M
- Large-scale resource extraction
- Climate change- mitigation and adaptation



## Some Priority Policy Issues

- ▶ Trust responsibility, subsistence and treaty reserved resource protection
- ▶ Funding for tribal environmental program implementation
- ▶ Tribal consultation and treatment as state processes
- ▶ Statutory, regulatory, and procedural barriers to environmental protection
- ▶ Jurisdictional issues preventing funding eligibility and program implementation
- ▶ Collaborative, ecosystem-based approaches to environmental protection



# Thank you!

Questions and Discussion